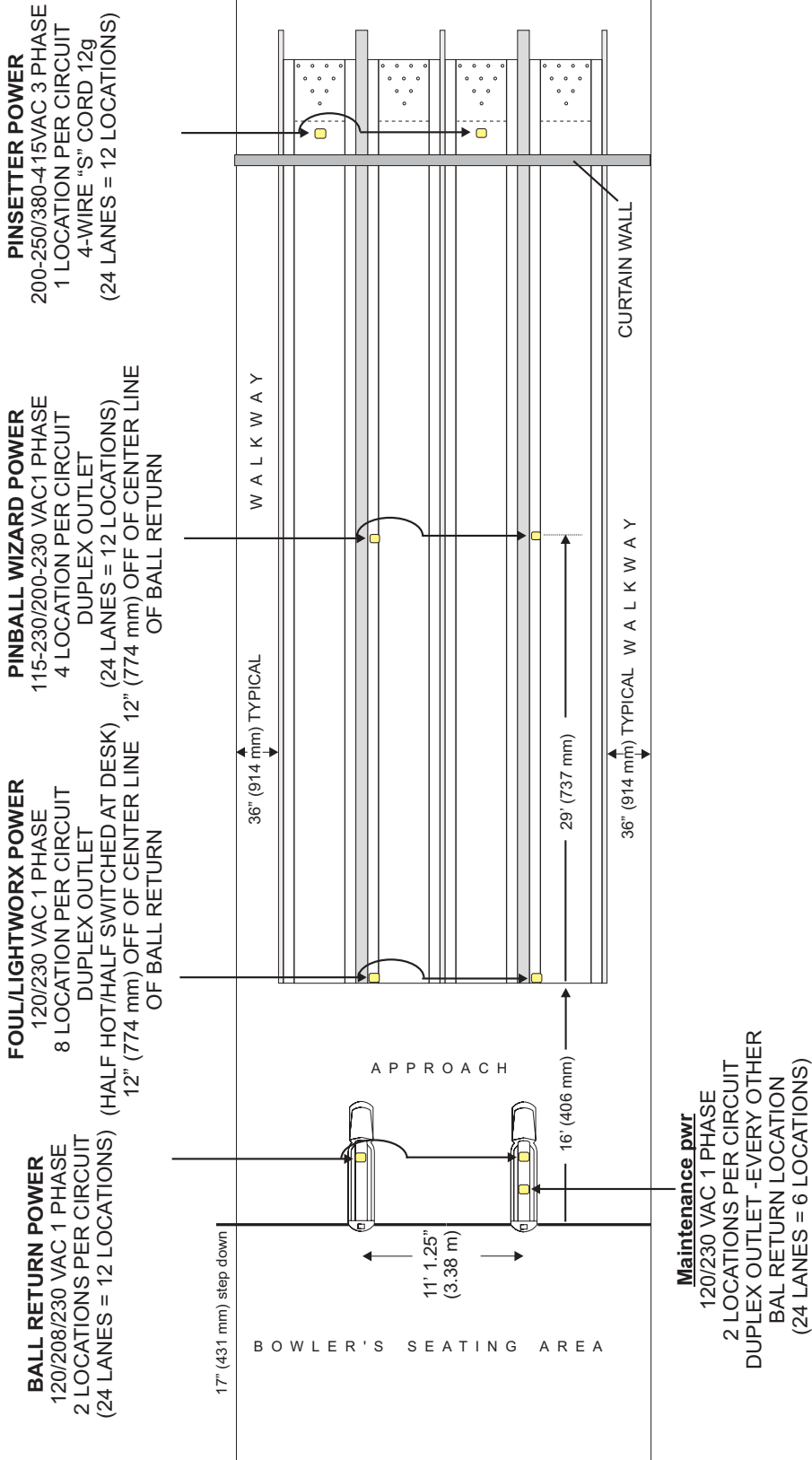
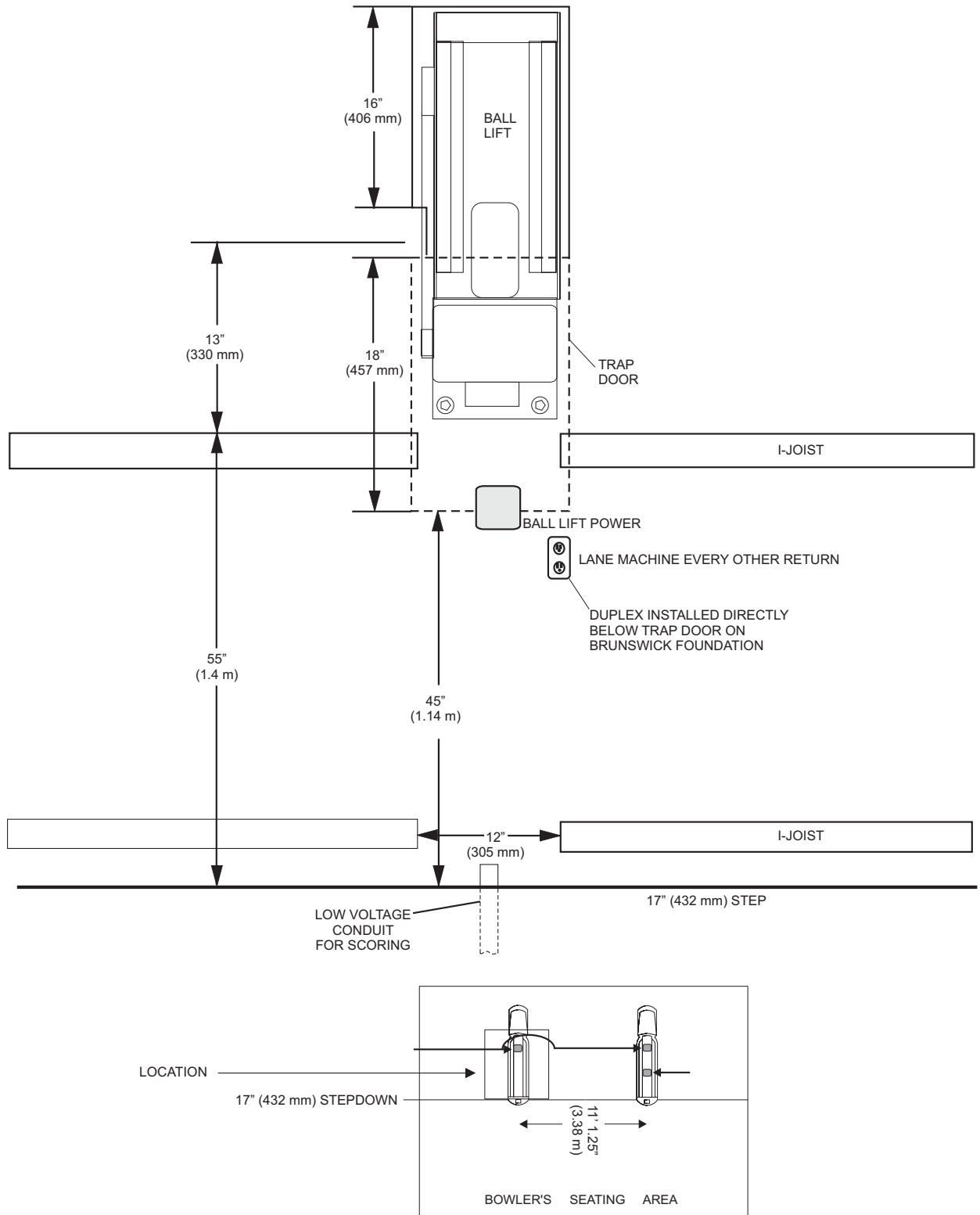


General Electrical Requirements

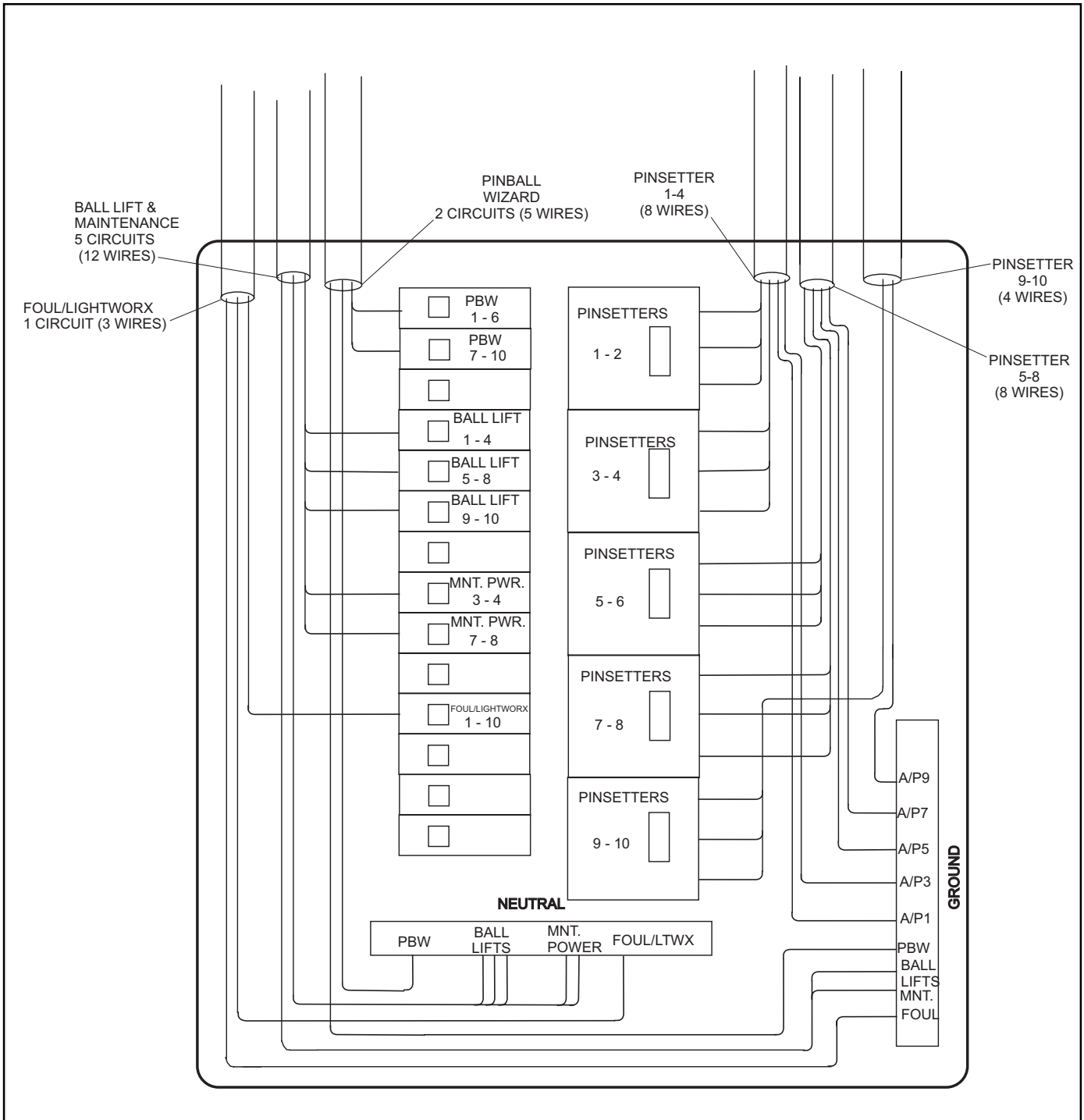
MISC. POWER REQUIREMENTS - NON IG (FROM PANEL OTHER THAN AUTO SCORER PANEL)



ALL ELECTRICAL INSTALLED ABOVE GRADE
AFTER INSTALLATION OF I-JOIST SYSTEM



Electrical Requirements - Approach Area

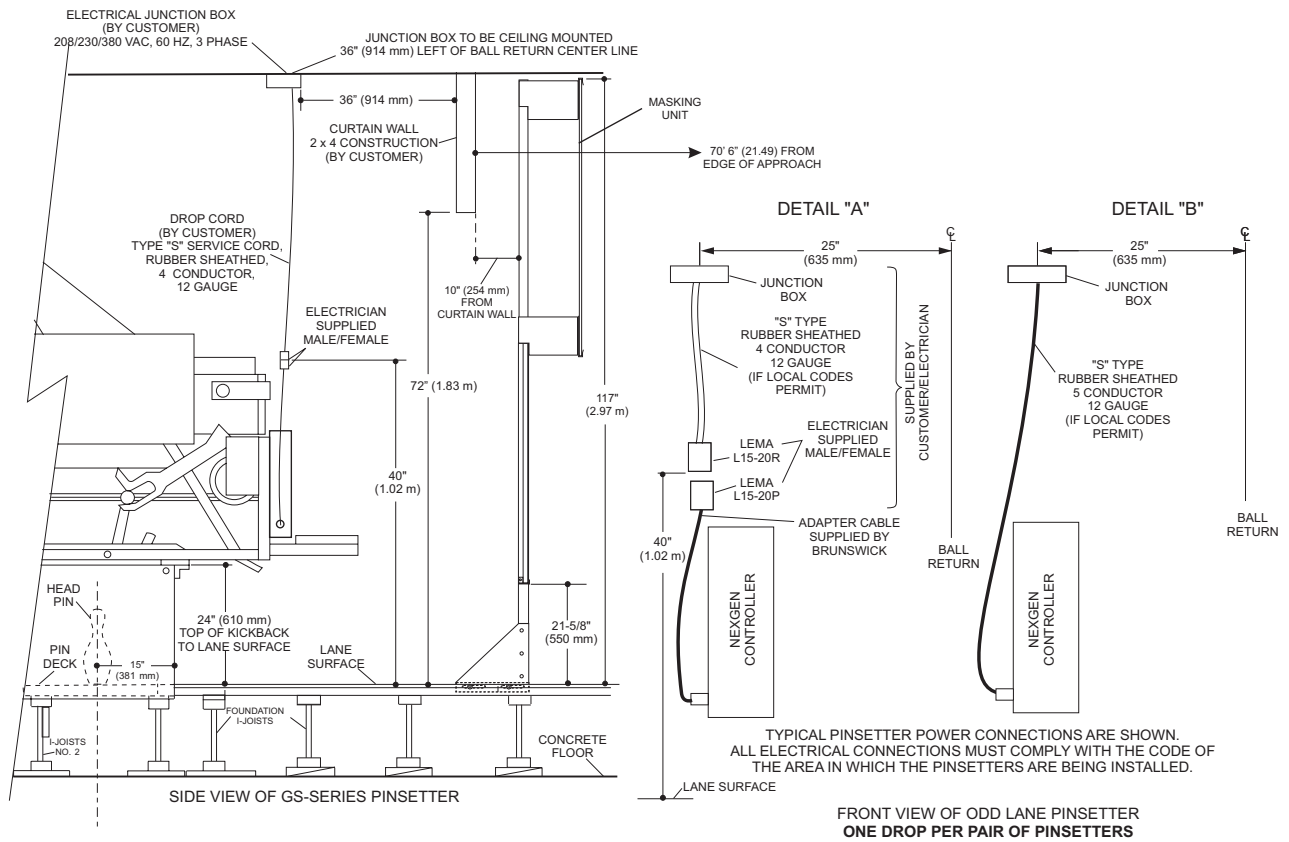


Pinsetter and Related Non I.G. Electrical Service Panel (for 10 lanes)

GS-Series Pinsetter Power Outlet Information

Power Requirements

Volts	Hertz	AC/DC	Phase	Amp	Watt-s	Circuit Requirement	Customer Responsibility	Brunswick Responsibility
200 - 250 380 - 415	50/60	AC	3	12	--	3 wire insulated ground	To supply feeder wiring, "J" box, flexible dropcord & mating plugs	To provide required adapter cable



Location

A junction box located 25" (64 cm) to the left of the ball return of a pair of GS-Series pinsetters.

Circuit Requirements

GS-Series Sub-Panel	Wires Per Circuit	Units Per Circuit	Wire Size	Breaker Size	Receptacle Supplied By Customer
Yes	3	Pair of lanes	12 Gauge	15A	Yes